

Mukuru Mapping

Description

The **Mukuru Mapping** exercise consisted of the comprehensive mapping and mobilising of key community health assets in two of the 14+ villages of Mukuru, Mukuru Kwa Reuben and Mukuru Kwa Njenga. Mukuru is one of the largest urban settlements in Africa with a reported population of up to 750,000 residents. Using the Participatory Inquiry into Community Health Assets Networks and Agencies (PICHANA) model approximately 150 community leaders and members were mobilised to participate in a highly engaged inquiry of programs and organizations working for health in Mukuru and for HIV/AIDS prevention for youth.

The Interfaith Health Program of the Rollins School of Public Health at Emory University and its partners brought together community members and leaders over two weeks, many meeting for the first time, in a series of five interactive workshops (two for Community Leaders and three for Community Members). Consultations were also held with key decision-makers in the two villages where their insights and perspectives combined to form a broad scope of local life regarding the daily fight against HIV/AIDS.

Building upon previous landmark initiatives in Kenya and other parts of Africa, the Partnership Team deployed the PICHANA approach which blended Participatory Engagement Workshops with Geographic Information System (GIS) Mapping ("Participatory GIS" or "P/GIS"), to create a new "picture" of the community.

Beginning with a "blank slate" of informal housing and slum dwellings – the community identified and subsequently mapped over 200 organizations and programs working on HIV/AIDS in the two villages alone.



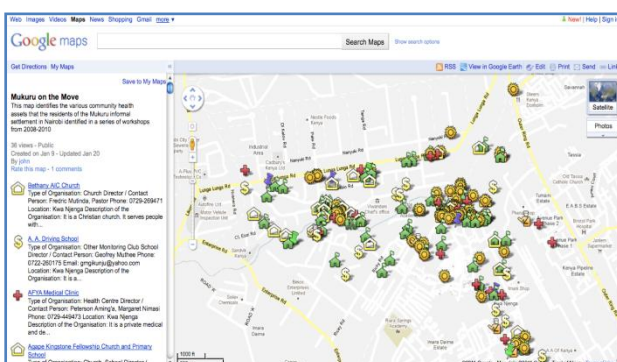
Community members workshop

Goals

- To develop a model of community collaboration and mobilisation that can address HIV prevalence.
- Enable local youth dwellers to identify and map Community Health Assets and HIV and AIDS service providers that are "youth friendly", gender sensitive, and meet other criteria defined by the youth.

Achievements

- Discussed lessons learned in a consultative meeting with mapping implementation and planning team.
- Developed a directory of over 200 mapped community health assets and their profiles.
- Produced both paper based and interactive GIS maps of Mukuru highlighting the mapped assets.
- Training a team of youth from Mukuru in participatory community mapping and open source GIS mapping.



GIS Map of Mukuru

- Documented the PICHANA model and produced an operational manual and handbook.
- Held meetings with other organisations engaged in mapping, such as UNICEF, JHIEGO and Map Kibera to identify opportunities for linkages and leveraging resources.
- Initiated the process of documenting the mapping model for use in the HFG expansion plan and beyond.

Lesson Learned

- Mukuru is a complex and diverse community with significant challenges and changing social dynamics.
- Community health assets need to be working together instead of separately.
- Comprehensive mapping has provided a fundamental base of information, trust and engagement for HIV prevention, decision-making and implementation.
- Building upon Mukuru's community health assets is a highly cost-effective HIV prevention and community investment/development strategy.



Workshop at Hope Worldwide

Next Steps

- Follow transformation in Mukuru and emergence of the "HIV-Free Generation" through innovative collaborative tools such as online interactive mapping, internet "fly thoughts", video documentaries, shared digital photography, cell phone and PDA downloads, personal narratives, music, drama, and other innovative vehicles.
- Establish linkages with other mapping initiatives.
- Disseminate the mapping model and companion tools.
- Develop a plan and strategy for integrating mapping into other HFG and implementing partner activities.

Partners

- The Interfaith Health Program, Rollins School of Public Health, Hubert Department of Global Health, Emory University
- HFG
- PEPFAR Implementing Partners
- St. Paul's University
- Hope Worldwide - Kenya
- Micato Safaris/AmericaShare
- Oakar Services Ltd
- Youth Facilitators from Mukuru

To learn more about Mukuru Mapping visit
www.g-pange.com